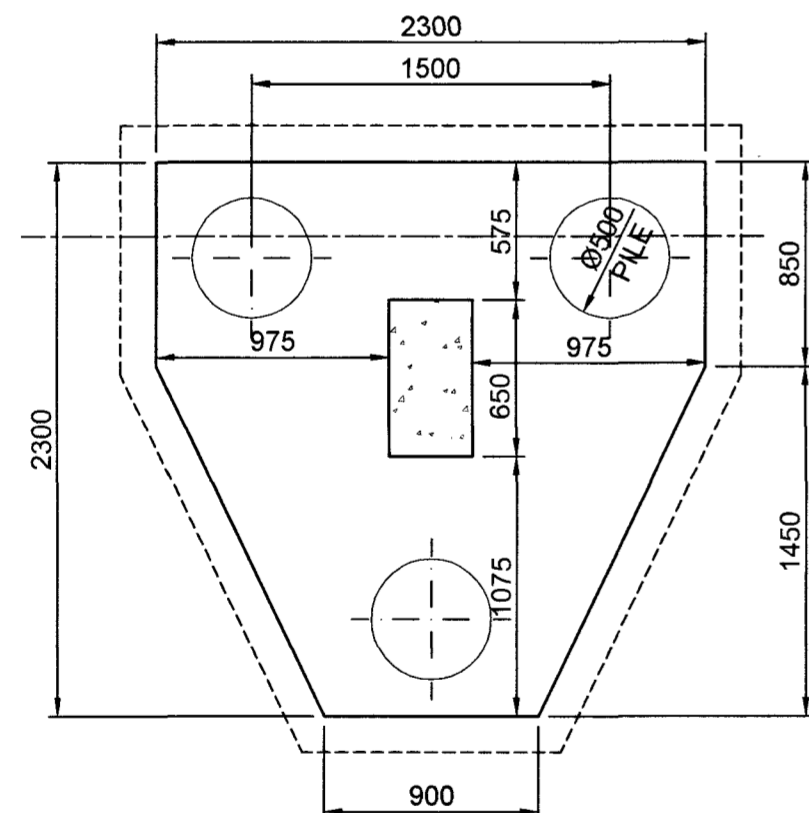
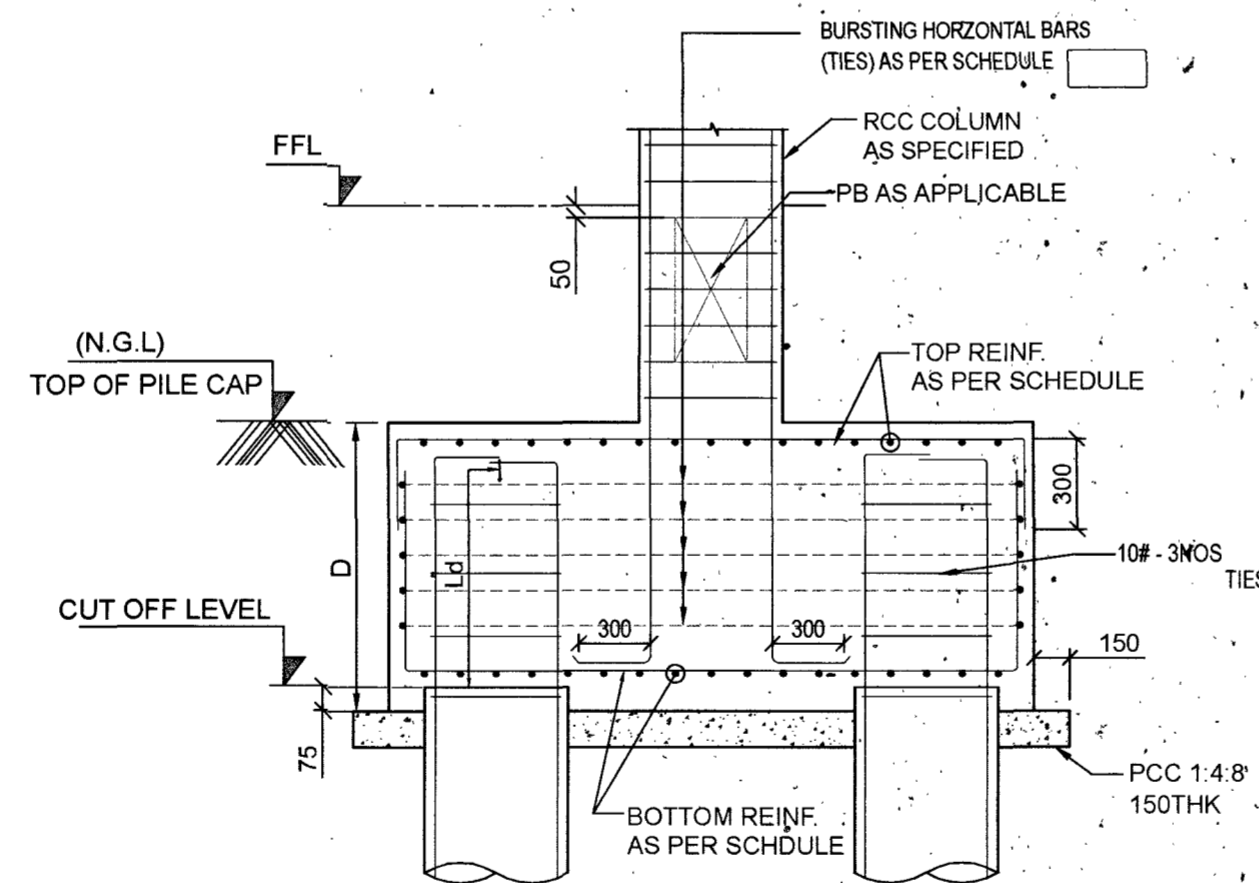


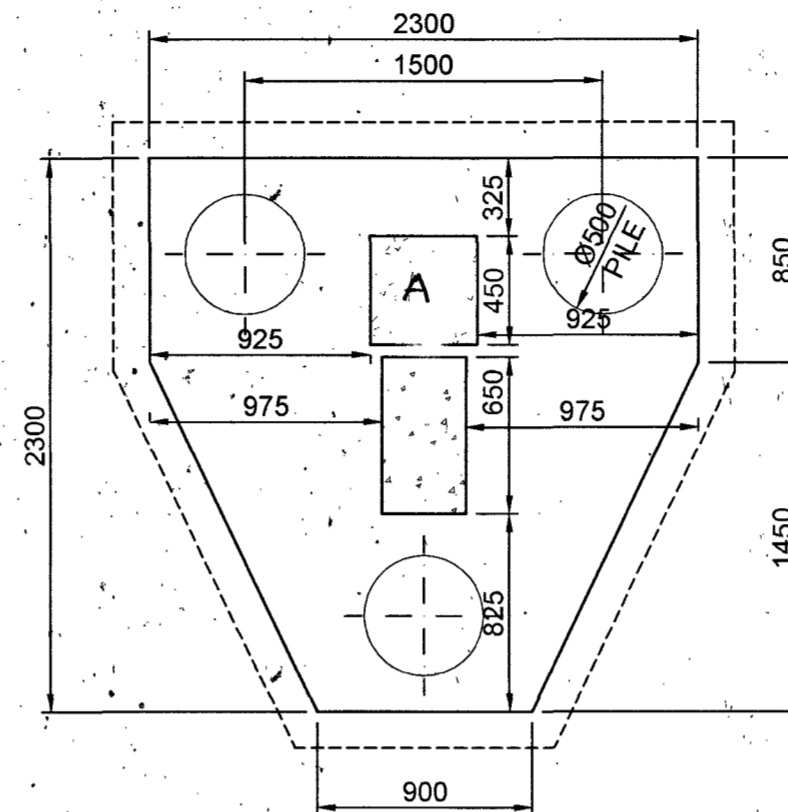
PILE CAP LAYOUT



PLAN OF PILE CAP (P1/PC1) AS DRAWN
PLAN OF PILE CAP (P1/PC1x) OPP HAND.

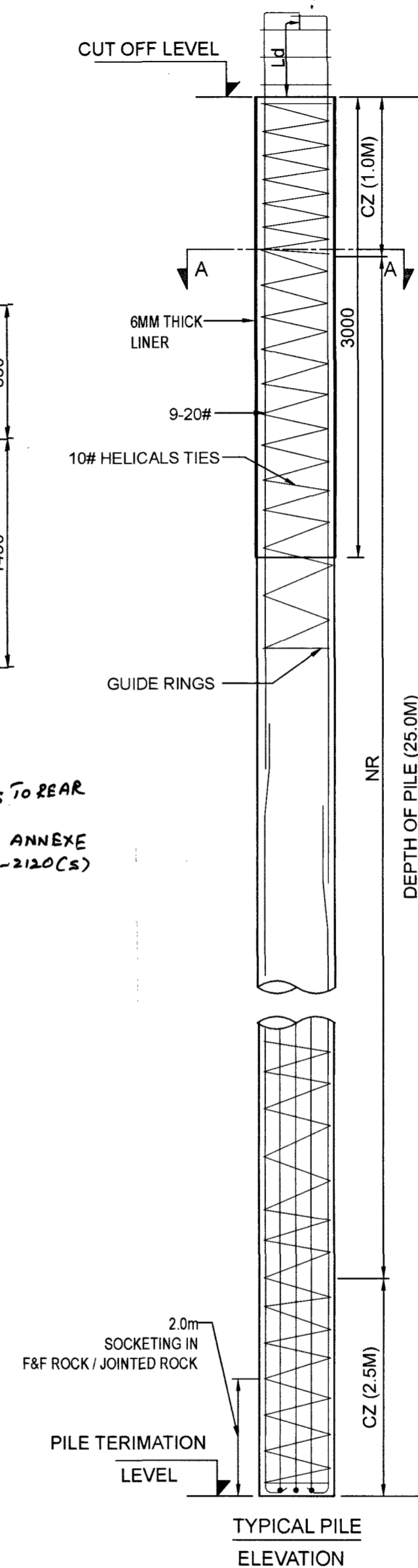


TYPICAL PILE CAP SECTION
















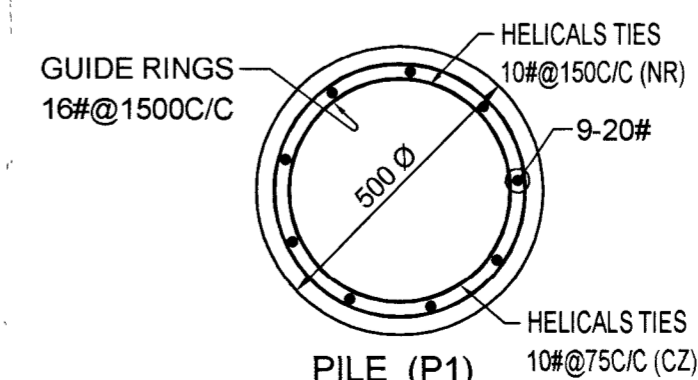
PLAN OF PILE CAP (P1/PC2)

NOTE:- COLUMN MARKED 'A' PERTAINS TO REAR
HARDSTANDING OF HANGAR WITH ANNEXE
BUILDING - REFER CEVZ/2022/WD-2120(CS)
SHEET - 1A/40



TYPICAL PILE
ELEVATION

SCHEDULE OF RCC PILE CAPS																				
SLNO.	TYPE OF PILE CAP	PILE			SIZE OF PILE CAP			REINFORCEMENT IN PILE CAPS												
		TYPE	DIA	NO. OF PILES IN EACH PILECAP	LENGTH	WIDTH	DEPTH	BOTTOM BARS ALONG WIDTH 'B'		TOP BARS ALONG WIDTH 'B'		BOTTOM BARS ALONG LENGTH 'L'		TOP BARS ALONG LENGTH 'L'		BURSTING HORIZONTAL BARS (TIES) AT EQUAL SPACING		VERTICAL STIRRUPS ALONG WIDTH		
																				
'L'	'B'	'D'	DIA#	SPACING C/C	DIA#	SPACING C/C	DIA#	SPACING C/C	DIA#	SPACING C/C	DIA#	SPACING C/C	DIA#	NOS	LEGS	DIA#	SPACING C/C			
1	PC1	P1	500	3	2300	2300	1000	20	150	16	150	20	150	16	150	12	7	-	-	-
2	PC2	P1	500	3	2300	2300	1000	20	150	16	150	20	150	16	150	12	7	-	-	-



PILE (P1)

NOTES

1. ALL DIMENSIONS AND LEVELS GIVEN ARE IN MILLIMETERS UNLESS OTHERWISE SPECIFIED.
2. FIGURED DIMENSIONS ONLY SHALL BE FOLLOWED.

DATE	DESCRIPTION	SIGN
03-03-23	NOTE ADDED	
REVISIONS		

VETTED BY

ALL DETAILS HAVE BEEN THOROUGHLY CHECKED AND ARE IN COMPLIANCE TO STANDARDS, CODES, REGULATIONS IN RESPECT OF SAFETY, SOUNDNESS AND ECONOMY.

PROVN OF HANGAR AND ANNEXE BUILDING AT INS DEGA VISAKHAPATNAM

AC PLANT ROOM

PILE CAP LAYOUT

SHT NO.	S01	HELIOS ENGINEERING CONSULTANTS #38-34-66 FCI COLONY MARRIPALEM VISAKHAPATNAM - 530018
PRO NO.	2204/2	
SCALE.	AS NOTED	
DRN BY.	KSS	
DATE.	28-02-2023	

DESIGNED BY

DV TRINADH RAO

CHECKED BY

S SURYA MS (STRUCTURES)

CHIEF ENGINEER (NAVY) VISAKHAPATNAM

REF.DRG.NO : CEVZ/2022/WD-2120(S)(AC) Sht.No. 1A/3

DESIGNS & DRAWINGS PREPARED UNDER CONSULTANCY FROM M/S HELIOS ENGINEERING CONSULTANTS AND VETTED BY ANDHRA UNIVERSITY

Srinivas Nalla, IDSE
CE (NF)
Director (Design)
for Chief Engineer